

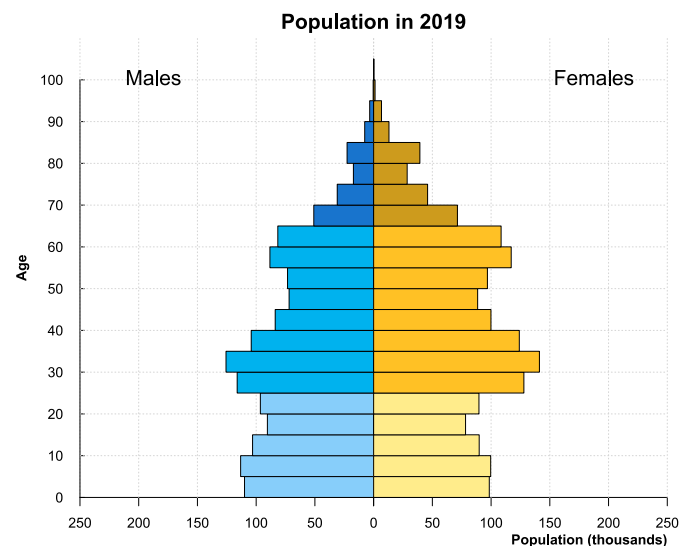
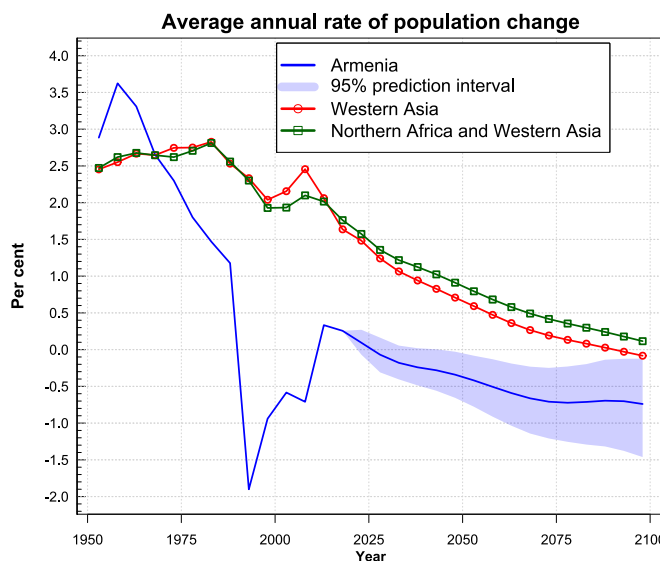
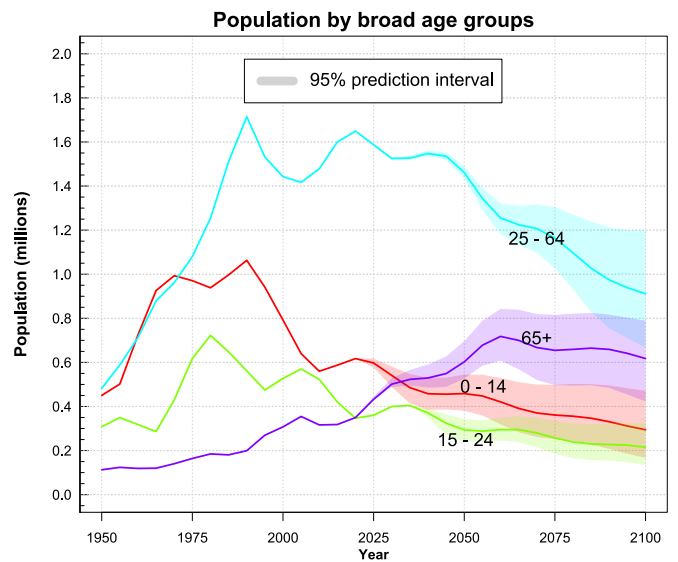
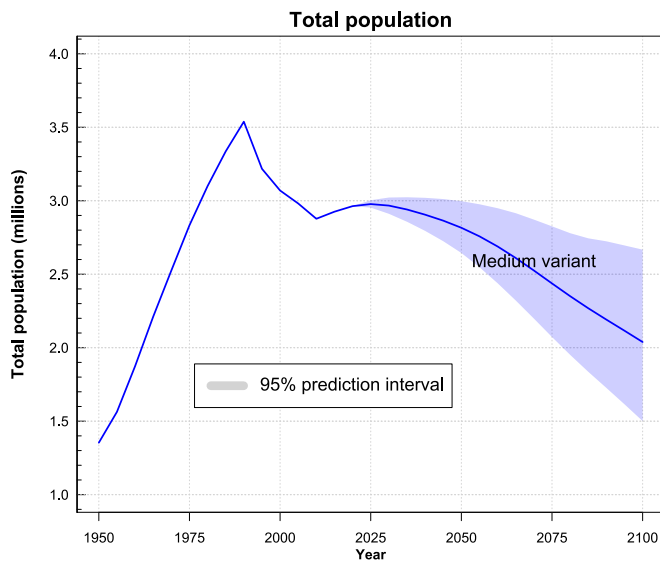
Armenia

Total population (millions)	3.0
Percentage of population under age 15	20.8
Percentage of population aged 15-24	12.0
Percentage of population aged 25-64	55.8
Percentage of population aged 65+	11.5
Potential support ratio (persons 25-64 per 65+)	4.9
Annual rate of population change (percentage)	0.2
Crude birth rate per 1,000 population	13.7
Total fertility (live births per woman)	1.76
Crude death rate per 1,000 population	9.8
Infant mortality (1q0) per 1,000 live births	10
Under-five mortality (5q0) per 1,000 live births	13
Life expectancy at birth (years)	75.1
Life Expectancy at age 65 (years)	15.9

2019

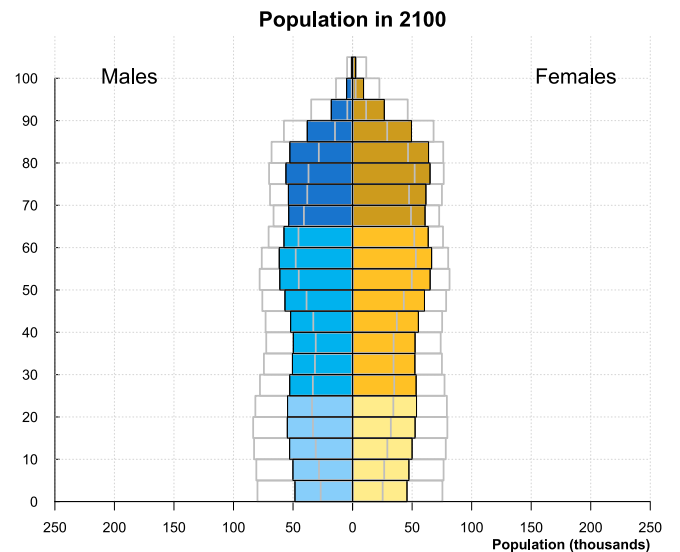
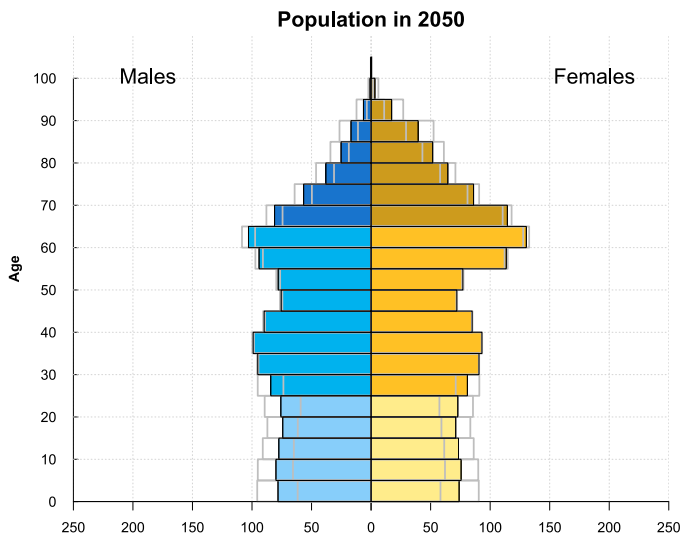
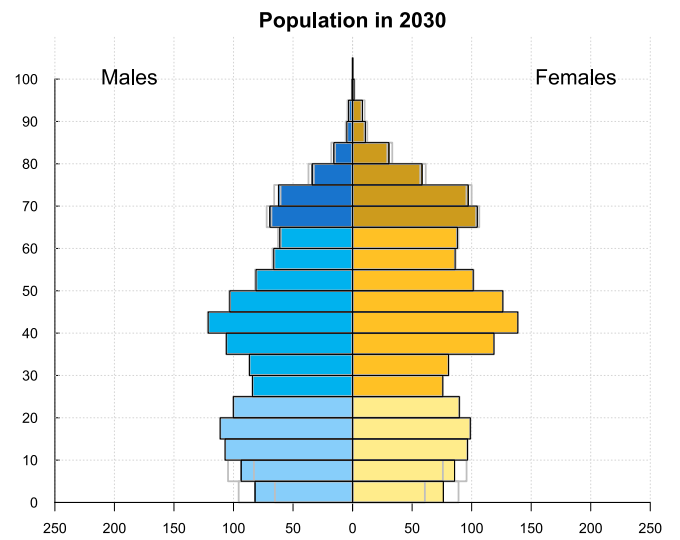
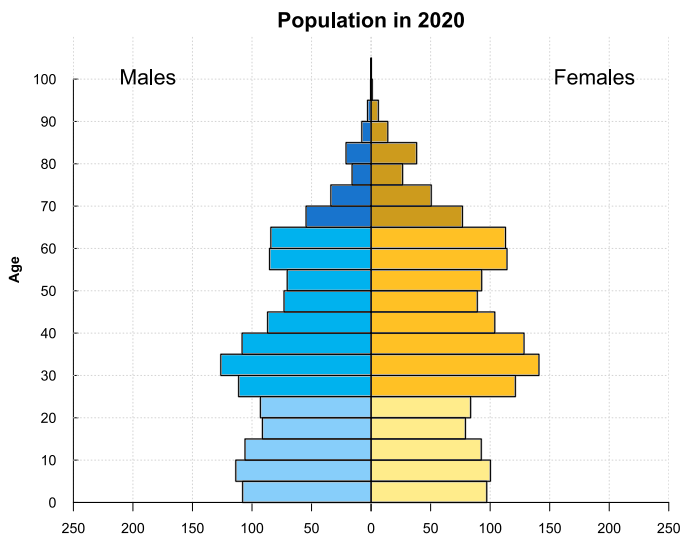
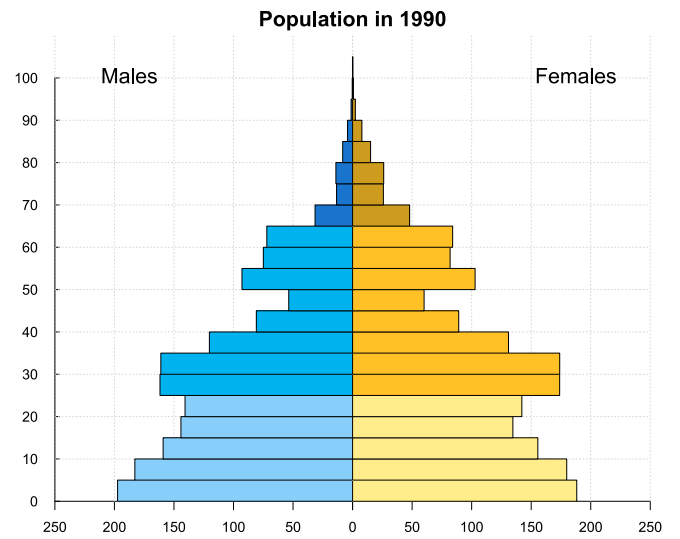
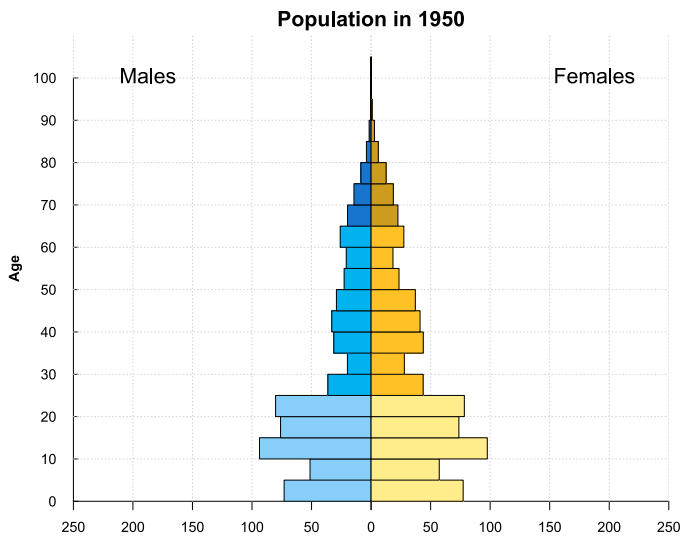


Map Sources: UNCS, ESRI.
The boundaries and names shown and the designations used on this map do not imply official endorsement or acceptance by the United Nations. Map created in Jun 2013.



Medium-variant projections for 2020-2100 are shown as thin coloured lines, and uncertainty is shown in lighter shades for 95 per cent prediction intervals.

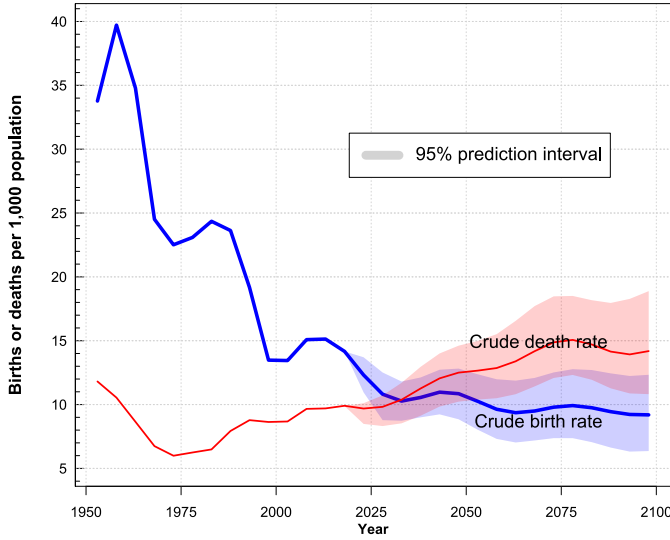
Armenia



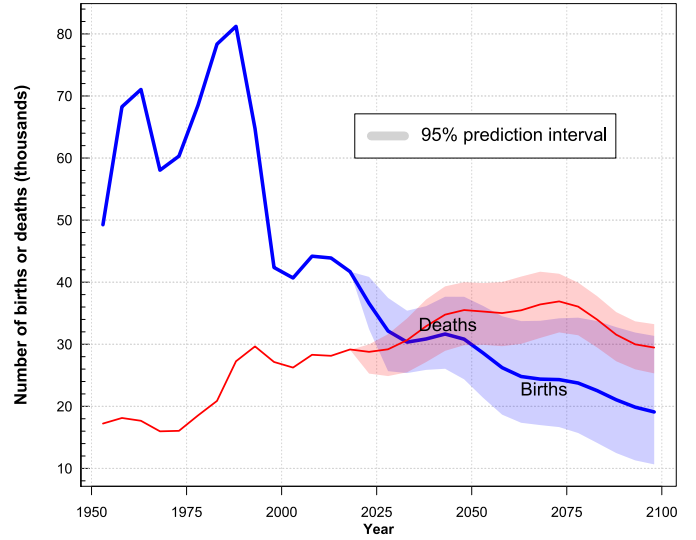
Medium-variant projections for 2020-2100 are shown as thin coloured lines, and uncertainty is shown in lighter shades for 95 per cent prediction intervals.

Armenia

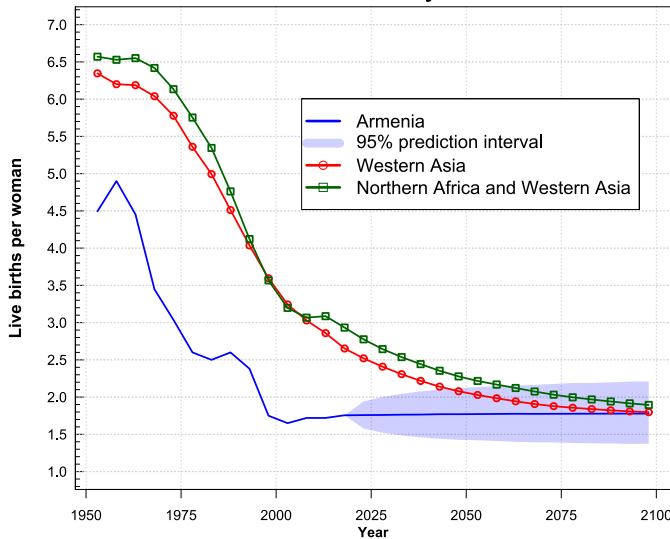
Crude birth rate and crude death rate



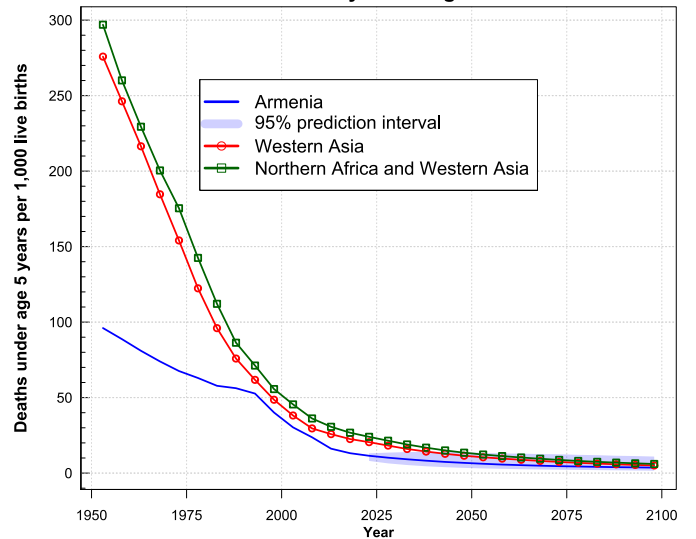
Average annual number of births and deaths



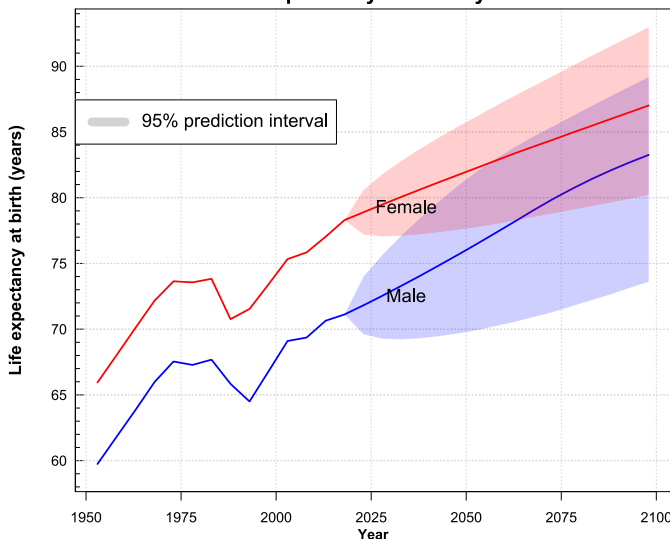
Total fertility



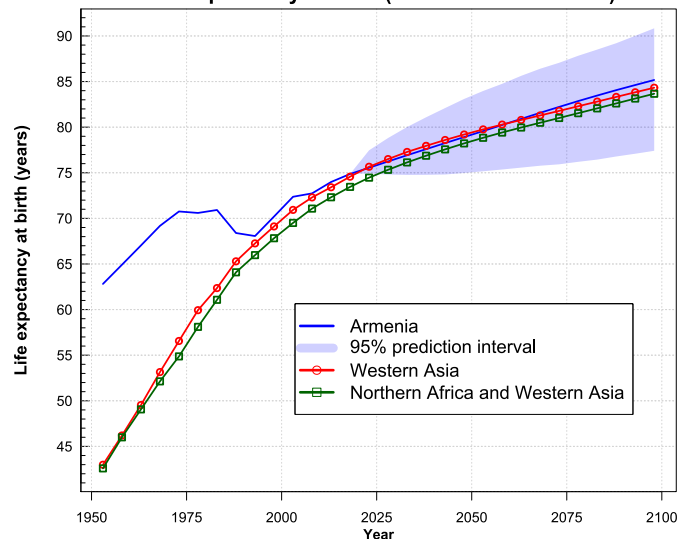
Mortality under age 5



Life expectancy at birth by sex



Life expectancy at birth (both sexes combined)



Medium-variant projections for 2020-2100 are shown as thin coloured lines, and uncertainty is shown in lighter shades for 95 per cent prediction intervals.

Armenia

	1950	1970	1990	2000	2005	2010	2015	2020	2030	2050	2075	2100
Population												
Total population (thousands)	1 354	2 525	3 538	3 070	2 981	2 877	2 926	2 963	2 967	2 816	2 437	2 039
Median age (years) (a)	22.4	20.3	27.2	30.6	31.8	32.9	33.8	35.4	39.8	43.2	47.5	48.9
Population under age 15 (thousands).....	450	993	1 063	792	640	560	587	617	541	459	361	294
Population aged 15-24 (thousands).....	308	430	562	527	570	523	420	347	400	294	257	216
Population aged 25-64 (thousands).....	482	962	1 714	1 443	1 417	1 478	1 600	1 649	1 525	1 461	1 164	911
Population aged 65+ (thousands).....	113	140	199	307	355	316	318	350	501	602	655	617
Percentage of population under age 15.....	33.3	39.3	30.0	25.8	21.5	19.5	20.1	20.8	18.2	16.3	14.8	14.4
Percentage of population aged 15-24.....	22.8	17.0	15.9	17.2	19.1	18.2	14.4	11.7	13.5	10.4	10.6	10.6
Percentage of population aged 25-64.....	35.6	38.1	48.5	47.0	47.5	51.4	54.7	55.7	51.4	51.9	47.8	44.7
Percentage of population aged 65+.....	8.3	5.6	5.6	10.0	11.9	11.0	10.9	11.8	16.9	21.4	26.9	30.3
Dependency ratios (per 100)												
Total dependency ratio (b)	180.7	162.6	106.4	112.8	110.5	94.7	82.9	79.7	94.6	92.7	109.4	123.7
Child dependency ratio (c).....	157.3	148.0	94.8	91.5	85.4	73.3	63.0	58.5	61.7	51.5	53.1	56.0
Potential support ratio (d)	4.3	6.9	8.6	4.7	4.0	4.7	5.0	4.7	3.0	2.4	1.8	1.5
	1950-1955	1965-1970	1985-1990	1995-2000	2000-2005	2005-2010	2010-2015	2015-2020	2025-2030	2045-2050	2070-2075	2095-2100
Rates of population change												
Annual rate of population change (percentage).....	2.9	2.7	1.2	-0.9	-0.6	-0.7	0.3	0.3	-0.1	-0.3	-0.7	-0.7
Population doubling time (years) (e)	24	26	59	—	—	—	—	—	—	—	—	—
Mortality												
Crude death rate per 1,000 population.....	11.8	6.8	7.9	8.6	8.7	9.7	9.7	9.9	9.8	12.5	14.9	14.2
Infant mortality rate (Iq0) per 1,000 live births	83	68	48	35	27	21	13	11	8	6	4	3
Under-five mortality (5q0) per 1,000 live births	96	74	56	40	30	24	16	13	10	7	5	4
Life expectancy at birth (years)	62.8	69.2	68.4	70.2	72.4	72.7	74.0	74.9	76.2	78.9	82.2	85.2
Male life expectancy at birth (years)	59.7	66.0	65.8	66.8	69.1	69.4	70.6	71.1	72.6	75.7	79.9	83.3
Female life expectancy at birth (years).....	65.9	72.2	70.8	73.4	75.3	75.8	77.0	78.3	79.5	81.8	84.4	87.0
Life expectancy at age 65 (years)	13.4	15.8	14.6	14.9	15.3	15.2	15.6	15.8	16.6	18.3	20.4	22.5
Fertility												
Crude birth rate per 1,000 population.....	33.8	24.5	23.6	13.5	13.5	15.1	15.1	14.2	10.8	10.9	9.8	9.2
Total fertility (live births per woman).....	4.49	3.45	2.60	1.75	1.65	1.72	1.72	1.76	1.76	1.77	1.78	1.78
Sex ratio at birth (males per 100 females)	106	106	106	115	117	115	114	111	108	106	106	106
Mean age of childbearing (years)	30.0	28.1	25.3	25.0	25.5	25.9	26.6	27.1	28.3	29.7	30.6	31.0
Births and deaths												
Number of births (thousands)	246	290	406	212	203	221	219	209	161	154	122	95
Number of deaths (thousands)	86	80	136	136	131	142	141	146	146	178	185	147
Births minus deaths (thousands).....	160	210	270	76	72	79	79	63	15	- 23	- 63	- 52
International migration												
Net number of migrants (thousands).....	50	103	- 68	- 224	- 161	- 183	- 31	- 25	- 25	- 25	- 25	- 25
Net migration rate (per 1,000)	6.8	8.7	-3.9	-14.2	-10.6	-12.5	-2.1	-1.7	-1.7	-1.8	-2.0	-2.4

a Age that divides the population in two parts of equal size, that is, there are as many persons with ages above the median as there are with ages below the median.

b The total dependency ratio is the ratio of the population aged 0-24 and that aged 65+ to the population aged 25-64. They are presented as number of dependants per 100 persons of working age (25-64).

c The child dependency ratio is the ratio of the population aged 0-24 to the population aged 25-64. They are presented as number of dependants per 100 persons of working age (25-64).

d The potential support ratio is the ratio of the population aged 25-64 to the population aged 65 years or over. They are presented as number of dependants per 100 persons of age 65 years or over.

e The population doubling time corresponds to the number of years required for the total population to double in size if the annual rate of population change would remain constant. Doubling time is computed only for fast growing populations with growth rates exceeding 0.5 per cent.

Armenia

Population: Total population and distribution by age and sex estimated to be consistent with the population by age and sex of the (a) 1959, 1970, 1979, 1989, 2001, 2011 censuses; (b) official estimates through 2017; (c) adjusted to reflect de-facto population; and with estimates of the subsequent trends in fertility, mortality and international migration.

Fertility: Total fertility rate and age pattern of fertility based on: (a) registered births classified by age of mother and the underlying female population by age through 2015; (b) birth-histories data from the 2000, 2005, 2010, 2015 DHS.

Child Mortality: Under-five mortality based on: direct estimates from births and deaths under-five calculated from full birth histories data from the 2000, 2005, 2010, 2015 DHS. In addition, the official estimates of infant and child mortality through 2017 have been considered.

Overall Mortality: Life expectancy at birth and age pattern of mortality based on: (a) official estimates through 2016; (b) adjusted for underregistration; (c) adjusted for underreporting of infant and child deaths.

Migration: International migration based on: estimates derived as the differences between overall population growth and natural increase.

Profile excerpt from the *World Population Prospects 2019, Volume II: Demographic Profiles*

This demographic profile displays key demographic indicators for selected periods or dates between 1950-2100, for the world, development groups, regions, subregions and countries or areas with more than 90,000 inhabitants in 2019. In all tables and figures, values for 1950-2020 are estimates and those thereafter are projections (medium variant, and lower and upper 95 per cent prediction intervals for figures). For each country or area, it also provides a brief description of the data sources and demographic methods that were used to derive the base-year estimates of population and components of demographic change (fertility, child, adult and overall mortality, international migration).

Further details about the respective data sources used for each country or area are available online interactively (<https://population.un.org/wpp/DataSources/>) with a tabular version of this information also available for download (<https://population.un.org/wpp/Download/Metadata/>). Further details about the methodology used to prepare the estimates and projections is explained in a companion report (*World Population Prospects 2019: Methodology of the United Nations Population Estimates and Projections*).

To depict the uncertainty of future demographic trends, the Population Division has developed probabilistic projections for all countries and areas of the world. It should be stressed that making projections to 2100 is subject to a high degree of uncertainty, especially at the country level. In that regard, users are invited to focus not only on the outcomes of the medium variant, which for each country corresponds to the median of several thousand projected trajectories of specific demographic components, but also to the associated prediction intervals that provide an assessment of the uncertainty inherent in such projections. Detailed information on the 80 per cent and 95 per cent uncertainty bounds for different components at the country level is available on the website of the Population Division (see <https://population.un.org/wpp/> for graphs or download data files for probabilistic results).

The detailed results of the *2019 Revision* are made available through a variety of media. The website of the Population Division provides access to an extended set of data organized in Excel and CSV files (<https://population.un.org/wpp/Download/>) as well as to an interactive database that enables users to obtain specific information on selected countries or regions (<https://population.un.org/wpp/DataQuery/>).

Notes

The designations employed in this publication and the material presented in it do not imply the expression of any opinion whatsoever on the part of the Secretariat of the United Nations concerning the legal status of any country, territory, city or area or of its authorities, or concerning the delimitation of its frontiers or boundaries. The term “country” as used in this publication also refers, as appropriate, to territories or areas. For country-specific notes, please refer to: <https://population.un.org/wpp/Download/Metadata/Documentation/>.

Countries or areas have been aggregated in six continental regions: Africa, Asia, Europe, Latin America and the Caribbean, Northern America, and Oceania. Further information on continental regions is available from <https://unstats.un.org/unsd/methodology/m49/>. Countries and areas are also grouped into geographic regions based on the classification being used to track progress towards the Sustainable Development Goals of the United Nations (see: <https://unstats.un.org/sdgs/indicators/regional-groups/>). Further details about the various classifications used to group countries and areas for statistical purposes into major aggregates in this publication are available online at: <https://population.un.org/wpp/DefinitionOfRegions/>.

The figures presented are from the medium variant of the World Population Prospects 2019, the official United Nations population estimates and projections prepared by the United Nations Population Division. Data are also available in digital form and can be consulted at the Population Division’s web site at <https://www.unpopulation.org>.

Suggested citation: United Nations, Department of Economic and Social Affairs, Population Division (2019). *World Population Prospects 2019, Volume II: Demographic Profiles* (ST/ESA/SER.A/427).

Copyright © 2019 by United Nations, made available under a Creative Commons license (CC BY 3.0 IGO) <http://creativecommons.org/licenses/by/3.0/igo/>.