

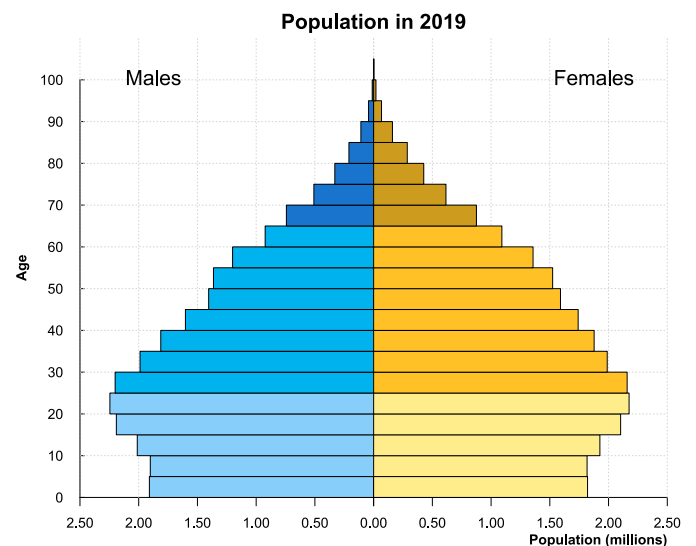
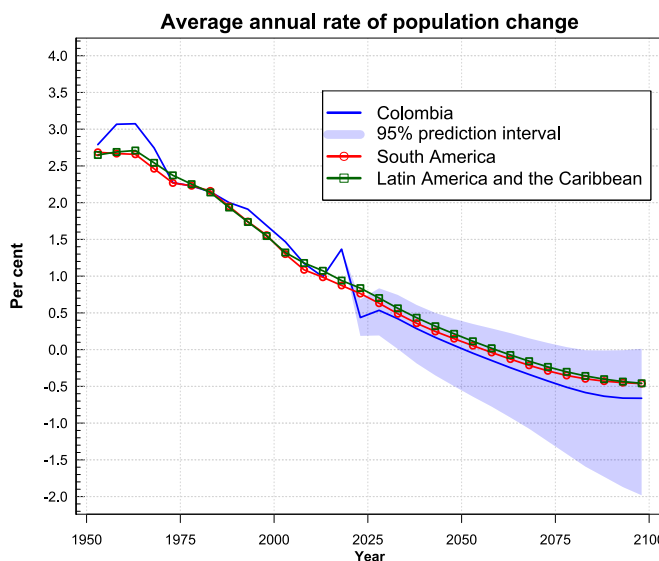
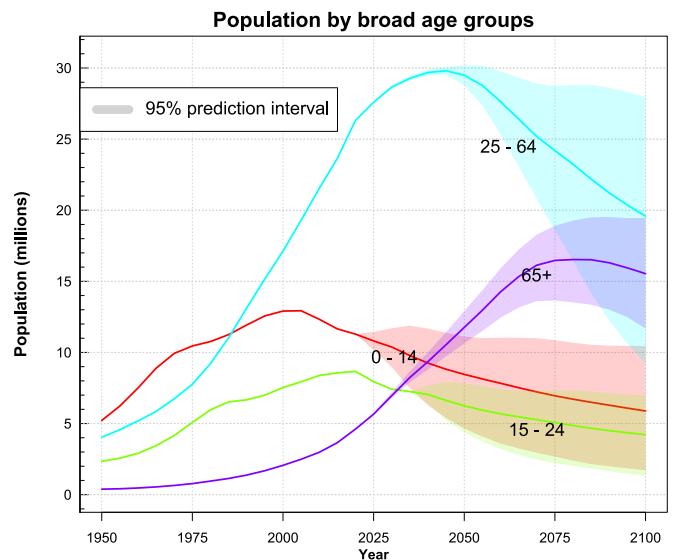
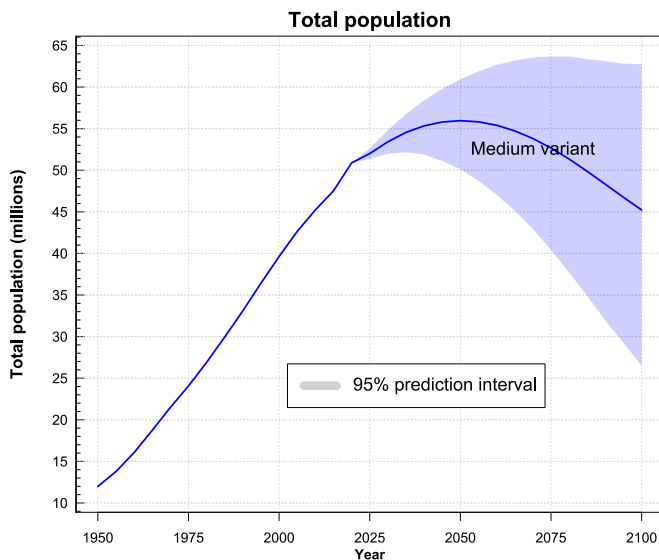
Colombia

Total population (millions)	50.3
Percentage of population under age 15	22.6
Percentage of population aged 15-24	17.3
Percentage of population aged 25-64	51.3
Percentage of population aged 65+	8.8
Potential support ratio (persons 25-64 per 65+)	5.9
Annual rate of population change (percentage)	1.2
Crude birth rate per 1,000 population	14.7
Total fertility (live births per woman)	1.79
Crude death rate per 1,000 population	5.6
Infant mortality (1q0) per 1,000 live births	12
Under-five mortality (5q0) per 1,000 live births	14
Life expectancy at birth (years)	77.3
Life Expectancy at age 65 (years)	19.2

2019



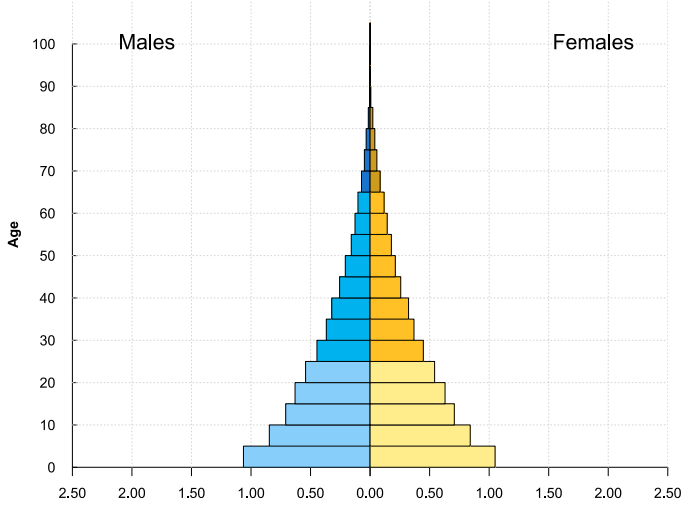
Map Sources: UNCS, ESRI.
The boundaries and names shown and the designations used on this map do not imply official endorsement or acceptance by the United Nations. Map created in Sep 2013.



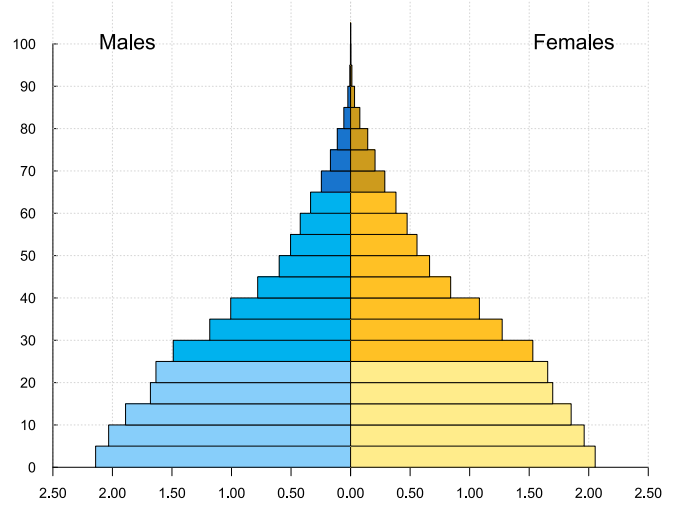
Medium-variant projections for 2020-2100 are shown as thin coloured lines, and uncertainty is shown in lighter shades for 95 per cent prediction intervals.

Colombia

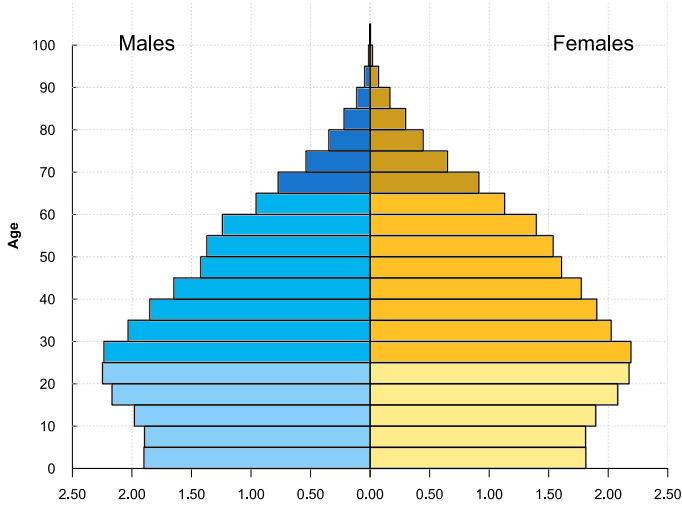
Population in 1950



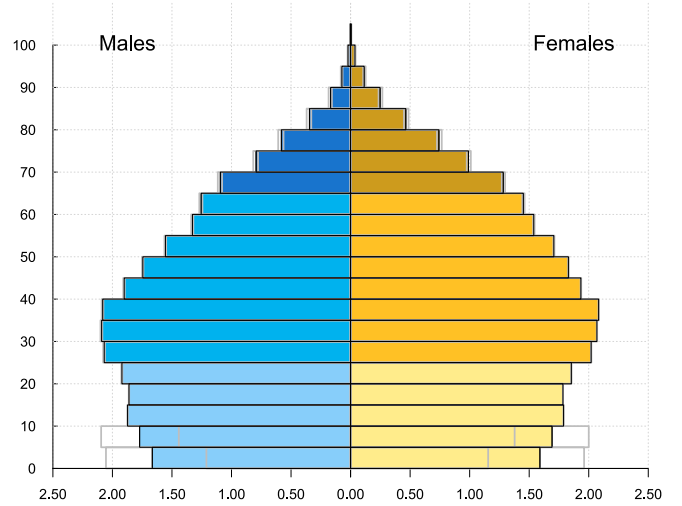
Population in 1990



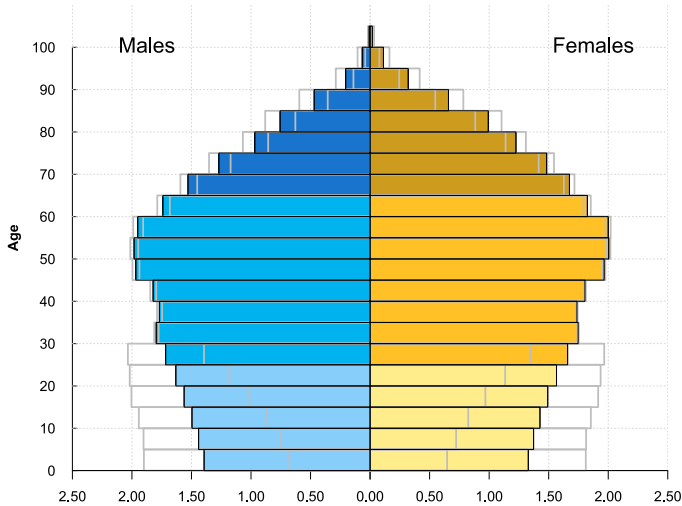
Population in 2020



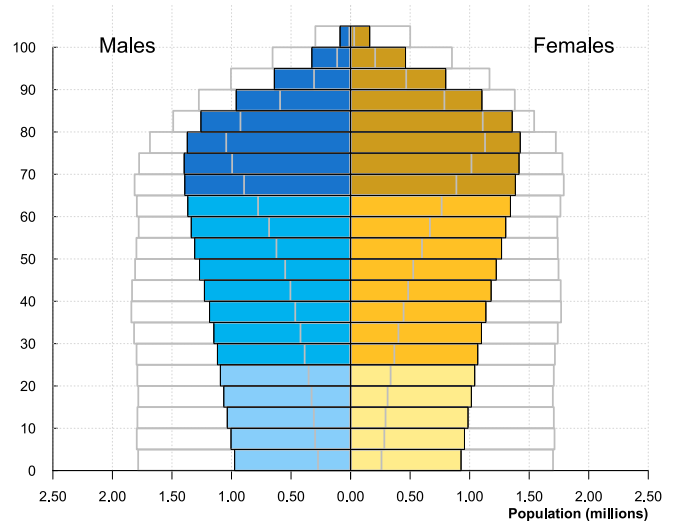
Population in 2030



Population in 2050



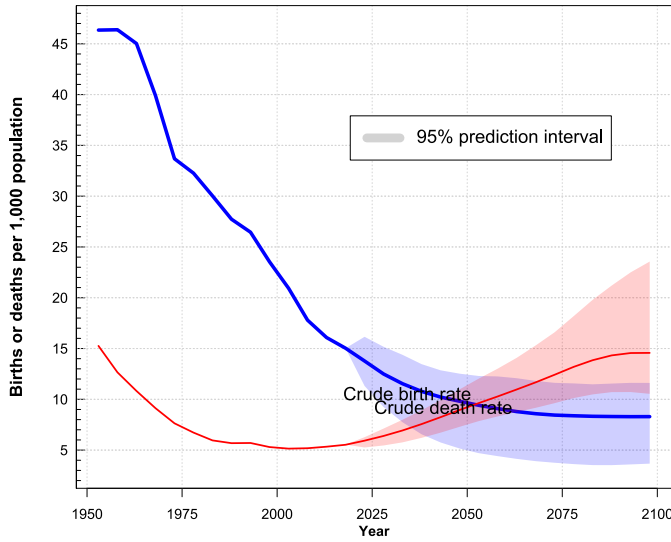
Population in 2100



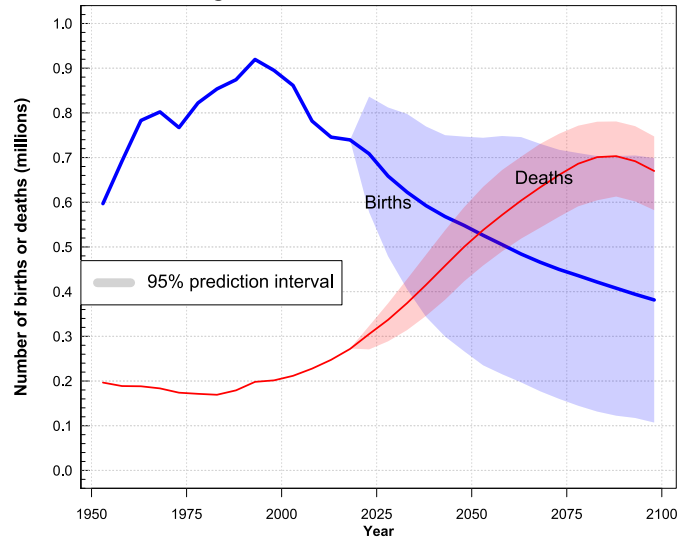
Medium-variant projections for 2020-2100 are shown as thin coloured lines, and uncertainty is shown in lighter shades for 95 per cent prediction intervals.

Colombia

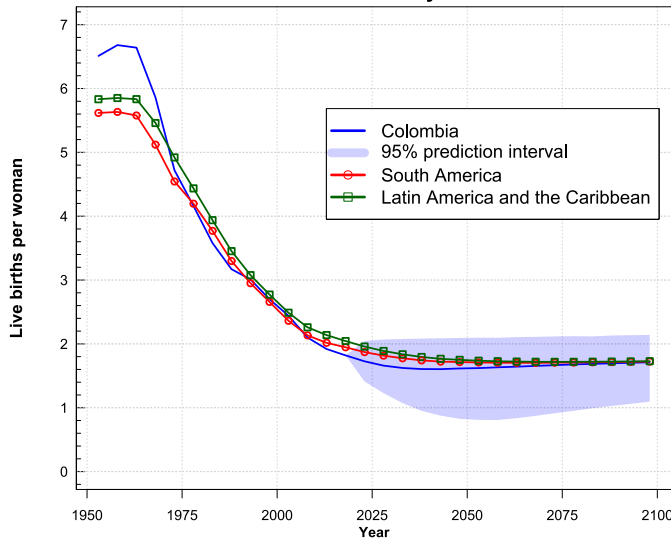
Crude birth rate and crude death rate



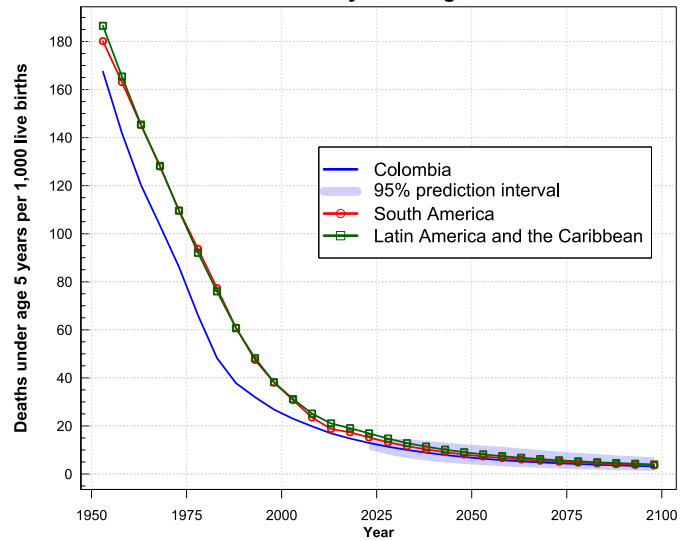
Average annual number of births and deaths



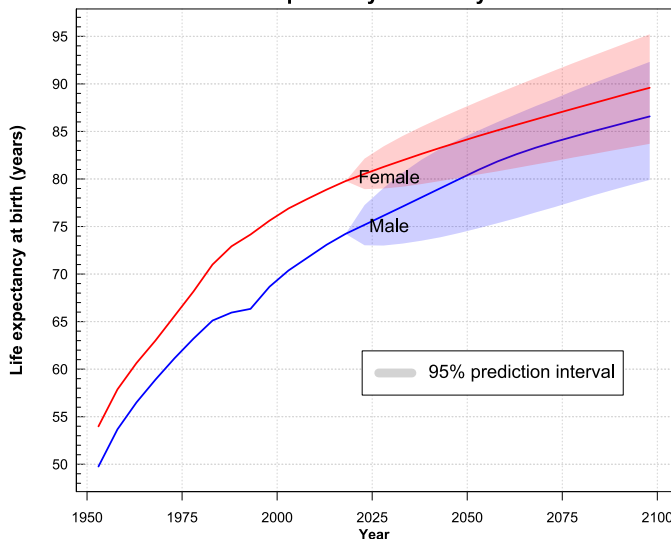
Total fertility



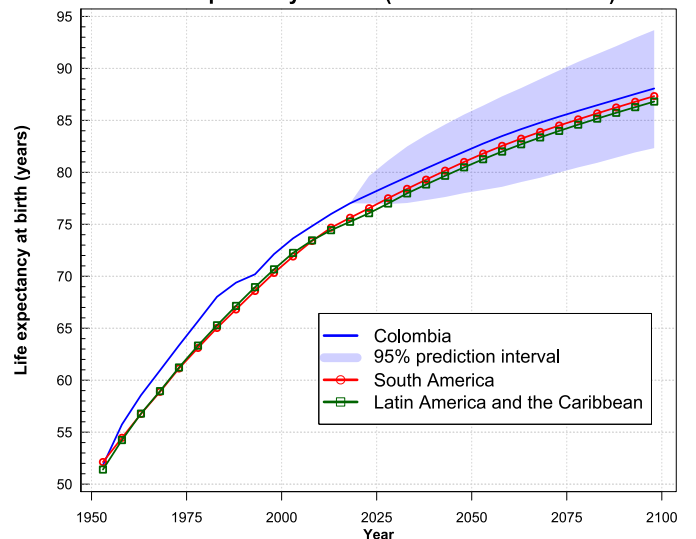
Mortality under age 5



Life expectancy at birth by sex



Life expectancy at birth (both sexes combined)



Medium-variant projections for 2020-2100 are shown as thin coloured lines, and uncertainty is shown in lighter shades for 95 per cent prediction intervals.

Colombia

	1950	1970	1990	2000	2005	2010	2015	2020	2030	2050	2075	2100
Population												
Total population (thousands)	11 982	21 480	33 103	39 630	42 648	45 223	47 521	50 883	53 417	55 958	52 675	45 221
Median age (years) (a)	18.1	16.7	21.9	24.1	25.7	27.5	29.5	31.3	35.8	43.9	50.1	51.7
Population under age 15 (thousands).....	5 216	9 933	11 931	12 909	12 931	12 332	11 657	11 288	10 380	8 459	6 952	5 884
Population aged 15-24 (thousands).....	2 344	4 160	6 669	7 533	7 934	8 379	8 563	8 668	7 419	6 251	5 064	4 215
Population aged 25-64 (thousands).....	4 036	6 740	13 126	17 126	19 294	21 534	23 645	26 317	28 656	29 489	24 191	19 583
Population aged 65+ (thousands).....	386	647	1 377	2 062	2 489	2 979	3 657	4 610	6 962	11 759	16 470	15 539
Percentage of population under age 15.....	43.5	46.2	36.0	32.6	30.3	27.3	24.5	22.2	19.4	15.1	13.2	13.0
Percentage of population aged 15-24.....	19.6	19.4	20.2	19.0	18.6	18.5	18.0	17.0	13.9	11.2	9.6	9.3
Percentage of population aged 25-64.....	33.7	31.4	39.7	43.2	45.2	47.6	49.8	51.7	53.7	52.7	45.9	43.3
Percentage of population aged 65+.....	3.2	3.0	4.2	5.2	5.8	6.6	7.7	9.1	13.0	21.0	31.3	34.4
Dependency ratios (per 100)												
Total dependency ratio (b)	196.9	218.7	152.2	131.4	121.0	110.0	101.0	93.4	86.4	89.8	117.8	130.9
Child dependency ratio (c).....	187.3	209.1	141.7	119.4	108.1	96.2	85.5	75.8	62.1	49.9	49.7	51.6
Potential support ratio (d)	10.5	10.4	9.5	8.3	7.8	7.2	6.5	5.7	4.1	2.5	1.5	1.3
	1950-1955	1965-1970	1985-1990	1995-2000	2000-2005	2005-2010	2010-2015	2015-2020	2025-2030	2045-2050	2070-2075	2095-2100
Rates of population change												
Annual rate of population change (percentage).....	2.8	2.8	2.0	1.7	1.5	1.2	1.0	1.4	0.5	0.1	-0.4	-0.7
Population doubling time (years) (e)	25	26	35	41	48	59	70	51	130	—	—	—
Mortality												
Crude death rate per 1,000 population.....	15.3	9.1	5.7	5.3	5.1	5.2	5.3	5.5	6.4	9.0	12.4	14.6
Infant mortality rate (Iq0) per 1,000 live births	117	75	31	22	20	17	14	13	10	6	4	3
Under-five mortality (5q0) per 1,000 live births	167	103	38	27	23	20	17	15	11	7	4	3
Life expectancy at birth (years)	51.8	60.9	69.4	72.1	73.7	74.8	76.0	77.0	78.7	82.0	85.4	88.1
Male life expectancy at birth (years)	49.8	58.9	66.0	68.7	70.4	71.7	73.1	74.2	76.1	80.0	83.9	86.6
Female life expectancy at birth (years).....	54.0	63.0	72.9	75.6	76.9	77.9	78.9	79.8	81.3	83.9	86.8	89.6
Life expectancy at age 65 (years)	11.4	13.2	15.6	16.9	17.5	18.0	18.5	19.0	19.9	21.5	23.5	25.2
Fertility												
Crude birth rate per 1,000 population.....	46.4	39.9	27.7	23.5	20.9	17.8	16.1	15.0	12.5	9.8	8.5	8.3
Total fertility (live births per woman).....	6.51	5.86	3.17	2.70	2.44	2.10	1.92	1.82	1.66	1.62	1.67	1.71
Sex ratio at birth (males per 100 females).....	105	105	105	105	105	105	105	105	105	105	105	105
Mean age of childbearing (years)	29.5	29.3	27.7	26.8	26.6	26.5	26.7	27.0	27.4	28.5	29.9	31.0
Births and deaths												
Number of births (thousands)	2 985	4 011	4 371	4 475	4 307	3 909	3 728	3 697	3 293	2 741	2 248	1 907
Number of deaths (thousands)	983	918	896	1 007	1 058	1 139	1 237	1 359	1 685	2 501	3 307	3 350
Births minus deaths (thousands).....	2 002	3 093	3 475	3 468	3 249	2 770	2 491	2 338	1 608	240	- 1 058	- 1 442
International migration												
Net number of migrants (thousands).....	- 208	- 339	- 324	- 259	- 231	- 195	- 193	1 024	- 198	- 79	- 79	- 79
Net migration rate (per 1,000)	-3.2	-3.4	-2.1	-1.4	-1.1	-0.9	-0.8	4.2	-0.8	-0.3	-0.3	-0.3

a Age that divides the population in two parts of equal size, that is, there are as many persons with ages above the median as there are with ages below the median.

b The total dependency ratio is the ratio of the population aged 0-24 and that aged 65+ to the population aged 25-64. They are presented as number of dependants per 100 persons of working age (25-64).

c The child dependency ratio is the ratio of the population aged 0-24 to the population aged 25-64. They are presented as number of dependants per 100 persons of working age (25-64).

d The potential support ratio is the ratio of the population aged 25-64 to the population aged 65 years or over. They are presented as number of dependants per 100 persons of age 65 years or over.

e The population doubling time corresponds to the number of years required for the total population to double in size if the annual rate of population change would remain constant. Doubling time is computed only for fast growing populations with growth rates exceeding 0.5 per cent.

Colombia

Population: Total population and distribution by age and sex estimated to be consistent with the population by age and sex of the (a) 1951, 1964, 1973, 1985, 1993, 2005 censuses; (b) adjusted censuses for underenumeration; (c) official estimates through 2018; and with estimates of the subsequent trends in fertility, mortality and international migration.

Fertility: Total fertility rate and age pattern of fertility based on: (a) registered births classified by age of mother and the underlying female population by age through 2016; (b) adjusted for underregistration; (c) birth-histories data from the 1986, 1990, 1995, 2000, 2005, 2010, 2015 DHS; (d) births in the household in the preceding 12 (or 24) months classified by age of mother from the 1969 ENF and 1973, 1985, 1993, 2005 censuses and 1976 WFS and 1978, 1980 CPS and 1978 ENH; (e) adjusted fertility using Brass P/F ratio method (or variants) with data on children ever born and births in the preceding 12 (or 24/36) months, both classified by age of mother, from the 1969 ENF and 1973, 1985, 1993, 2005 censuses and 1976 WFS and 1978, 1980 CPS and 1978 ENH; (f) indirect estimates obtained from the application of the reverse survival method to the 1993 Census; (g) indirect estimates obtained from the application of the own-children method of fertility estimation to the 1973 Census and 1976 WFS and 1978, 1980 ENH; (h) International estimates considered up to 2017. In addition, the official estimates of age-specific fertility rates through 2017 have been considered.

Child Mortality: Under-five mortality based on: (a) registered infant and child deaths through 2016; (b) adjusted for underregistration; (c) direct estimates from births and deaths under-five calculated from full birth histories data from the 1976 WFS and 1986, 1990, 1995, 2000, 2005, 2010, 2015 DHS; (d) indirect estimates from data on children ever born and surviving from the 1969 ENF and 1973, 1985, 2005 censuses and 1978, 1980 ENH; (e) International estimates considered up to 2017. In addition, the recent household deaths from the 2005 Census have been considered.

Overall Mortality: Life expectancy at birth and age pattern of mortality based on: (a) registered deaths by age and sex available through 2015; (b) adjusted for underregistration; (c) adjusted for underreporting of infant and child deaths; (d) adult deaths adjusted for underregistration using the growth balance method; (e) mortality rates were extrapolated using projection methods; (f) International estimates considered up to 2017; (g) estimates of under-five, adult and old age mortality. In addition, the official estimates through 2007 have been considered.

Adult and Old Age Mortality: Estimates derived from: (a) deaths by age and sex available from Register through 2015; (b) adjusted for underregistration; (c) recent household deaths data by age and sex from the 2005 Census; (d) recent household deaths adjusted at adult ages for underregistration using the growth balance method; (e) maternal orphanhood from the 1978 ENH and 1985 Census; (f) indirect estimates of adult mortality based on widowhood data from the 1978 ENH; (g) International estimates considered up to 2017.

Migration: International migration based on: (a) information on foreign-born populations from censuses and registers from major countries of destination (Latin American countries, Spain and United States of America); (b) estimates derived as the differences between overall population growth and natural increase; (c) UNHCR statistics on the number of refugees in the main countries of asylum.

Profile excerpt from the *World Population Prospects 2019, Volume II: Demographic Profiles*

This demographic profile displays key demographic indicators for selected periods or dates between 1950-2100, for the world, development groups, regions, subregions and countries or areas with more than 90,000 inhabitants in 2019. In all tables and figures, values for 1950-2020 are estimates and those thereafter are projections (medium variant, and lower and upper 95 per cent prediction intervals for figures). For each country or area, it also provides a brief description of the data sources and demographic methods that were used to derive the base-year estimates of population and components of demographic change (fertility, child, adult and overall mortality, international migration).

Further details about the respective data sources used for each country or area are available online interactively (<https://population.un.org/wpp/DataSources/>) with a tabular version of this information also available for download (<https://population.un.org/wpp/Download/Metadata/>). Further details about the methodology used to prepare the estimates and projections is explained in a companion report (*World Population Prospects 2019: Methodology of the United Nations Population Estimates and Projections*).

To depict the uncertainty of future demographic trends, the Population Division has developed probabilistic projections for all countries and areas of the world. It should be stressed that making projections to 2100 is subject to a high degree of uncertainty, especially at the country level. In that regard, users are invited to focus not only on the outcomes of the medium variant, which for each country corresponds to the median of several thousand projected trajectories of specific demographic components, but also to the associated prediction intervals that provide an assessment of the uncertainty inherent in such projections. Detailed information on the 80 per cent and 95 per cent uncertainty bounds for different components at the country level is available on the website of the Population Division (see <https://population.un.org/wpp/> for graphs or download data files for probabilistic results).

The detailed results of the *2019 Revision* are made available through a variety of media. The website of the Population Division provides access to an extended set of data organized in Excel and CSV files (<https://population.un.org/wpp/Download/>) as well as to an interactive database that enables users to obtain specific information on selected countries or regions (<https://population.un.org/wpp/DataQuery/>).

Notes

The designations employed in this publication and the material presented in it do not imply the expression of any opinion whatsoever on the part of the Secretariat of the United Nations concerning the legal status of any country, territory, city or area or of its authorities, or concerning the delimitation of its frontiers or boundaries. The term “country” as used in this publication also refers, as appropriate, to territories or areas. For country-specific notes, please refer to: <https://population.un.org/wpp/Download/Metadata/Documentation/>.

Countries or areas have been aggregated in six continental regions: Africa, Asia, Europe, Latin America and the Caribbean, Northern America, and Oceania. Further information on continental regions is available from <https://unstats.un.org/unsd/methodology/m49/>. Countries and areas are also grouped into geographic regions based on the classification being used to track progress towards the Sustainable Development Goals of the United Nations (see: <https://unstats.un.org/sdgs/indicators/regional-groups/>). Further details about the various classifications used to group countries and areas for statistical purposes into major aggregates in this publication are available online at: <https://population.un.org/wpp/DefinitionOfRegions/>.

The figures presented are from the medium variant of the World Population Prospects 2019, the official United Nations population estimates and projections prepared by the United Nations Population Division. Data are also available in digital form and can be consulted at the Population Division’s web site at <https://www.unpopulation.org>.

Suggested citation: United Nations, Department of Economic and Social Affairs, Population Division (2019). *World Population Prospects 2019, Volume II: Demographic Profiles* (ST/ESA/SER.A/427).

Copyright © 2019 by United Nations, made available under a Creative Commons license (CC BY 3.0 IGO) <http://creativecommons.org/licenses/by/3.0/igo/>.