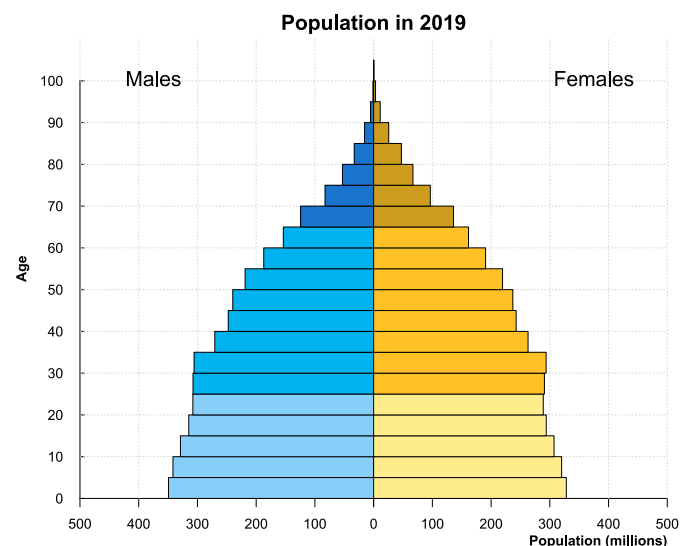
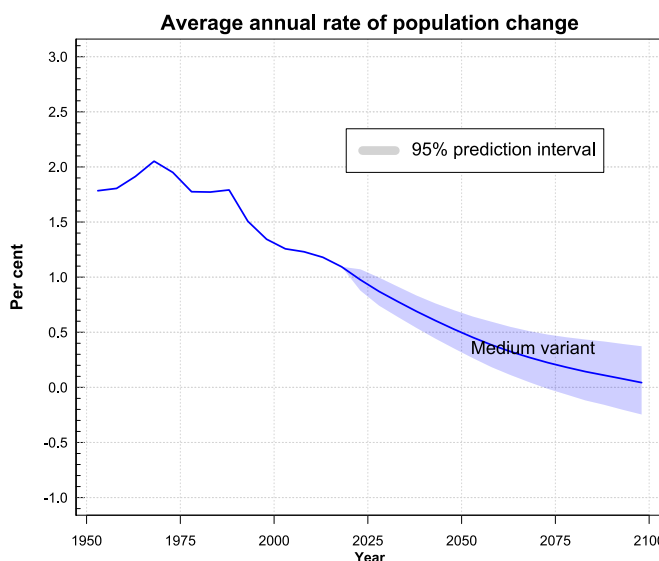
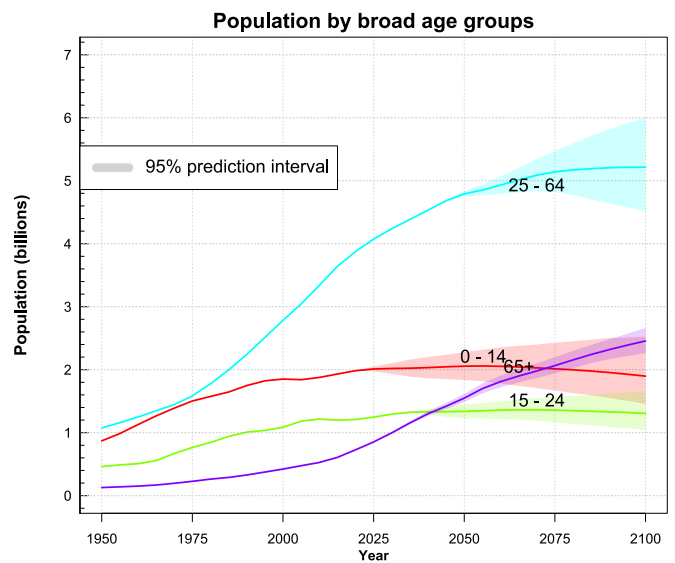
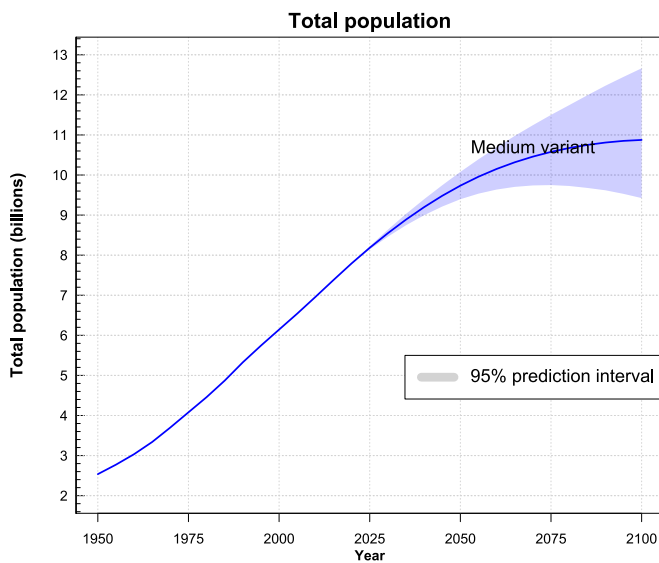


World

2019

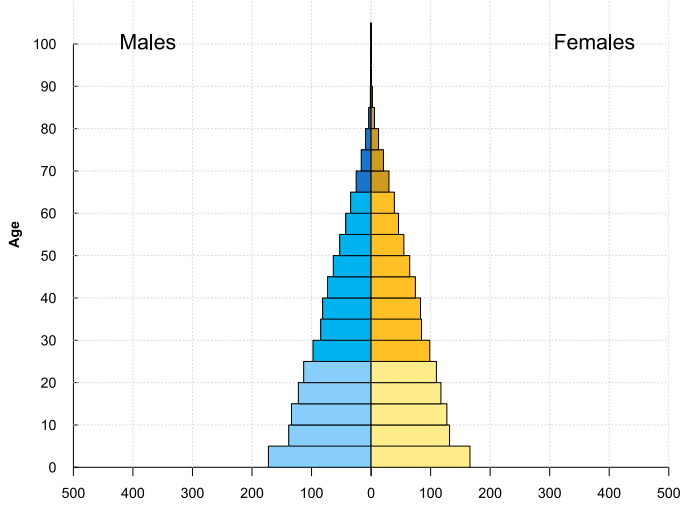
Total population (billions).....	7.7
Percentage of population under age 15.....	25.6
Percentage of population aged 15-24.....	15.6
Percentage of population aged 25-64.....	49.7
Percentage of population aged 65+.....	9.1
Potential support ratio (persons 25-64 per 65+)	5.5
Annual rate of population change (percentage).....	1.1
Crude birth rate per 1,000 population.....	18.2
Total fertility (live births per woman).....	2.45
Crude death rate per 1,000 population.....	7.6
Infant mortality (1q0) per 1,000 live births	28
Under-five mortality (5q0) per 1,000 live births	38
Life expectancy at birth (years)	72.6
Life Expectancy at age 65 (years).....	17.1



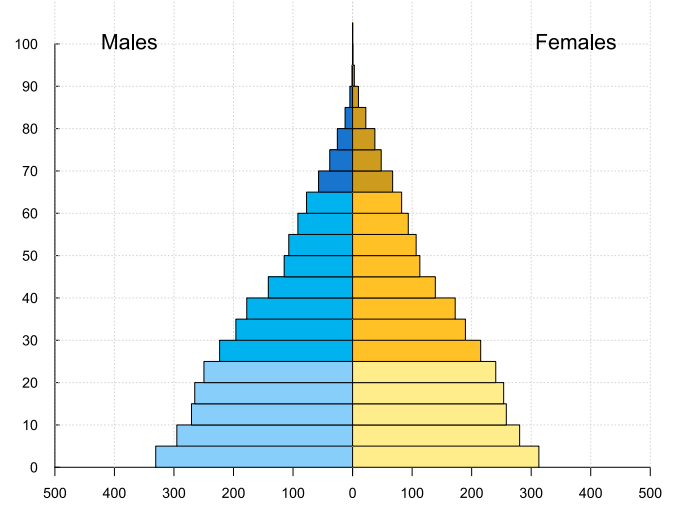
Medium-variant projections for 2020-2100 are shown as thin coloured lines, and uncertainty is shown in lighter shades for 95 per cent prediction intervals.

World

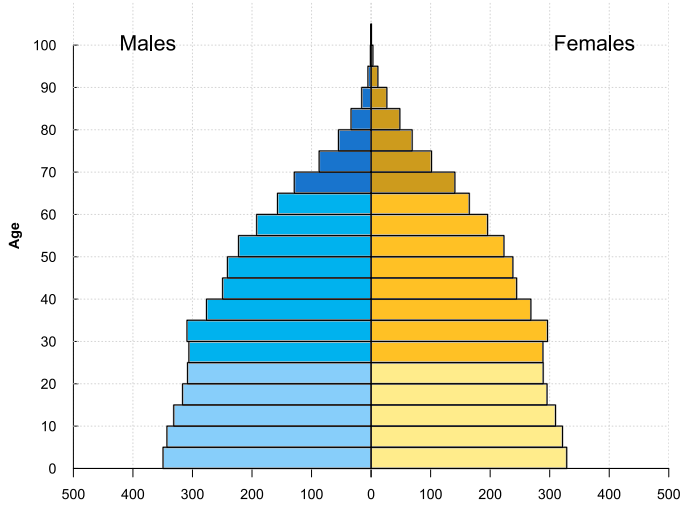
Population in 1950



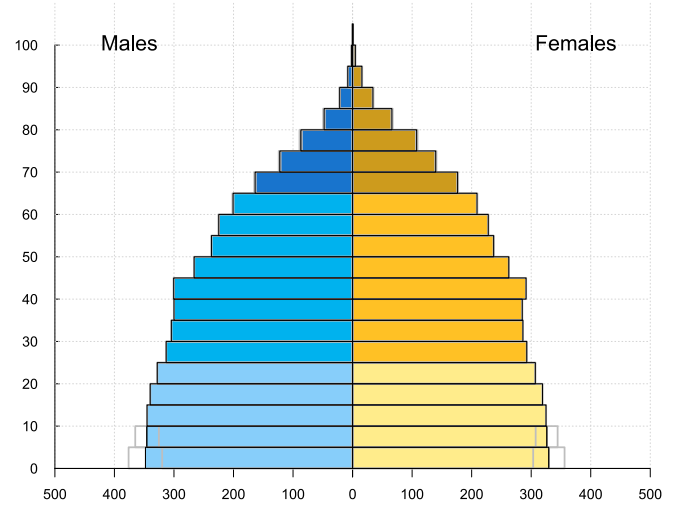
Population in 1990



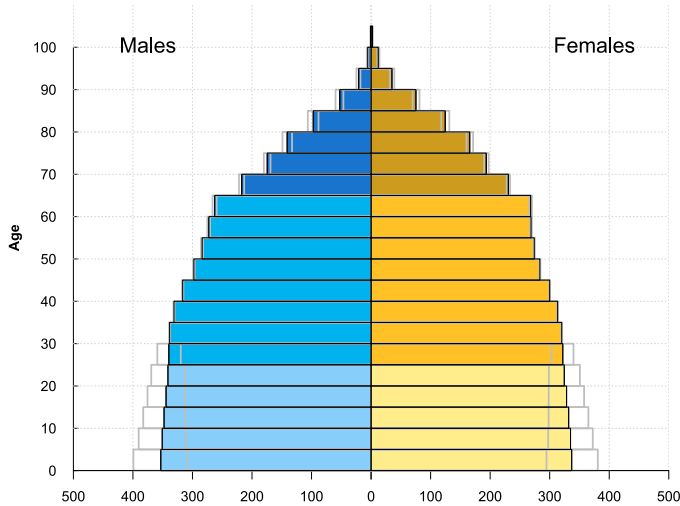
Population in 2020



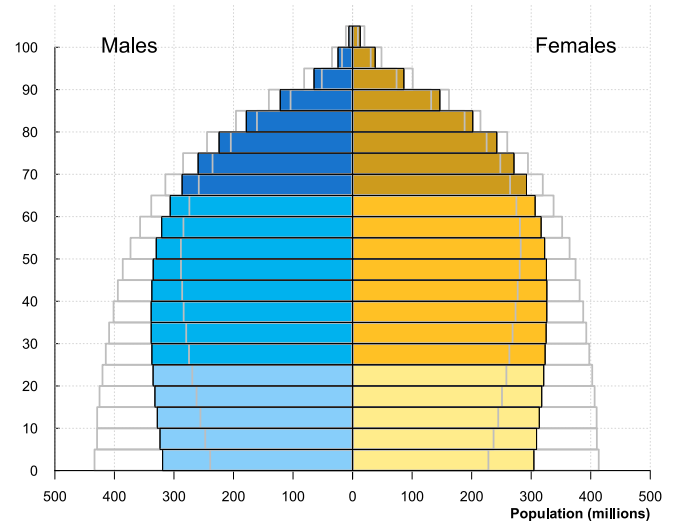
Population in 2030



Population in 2050



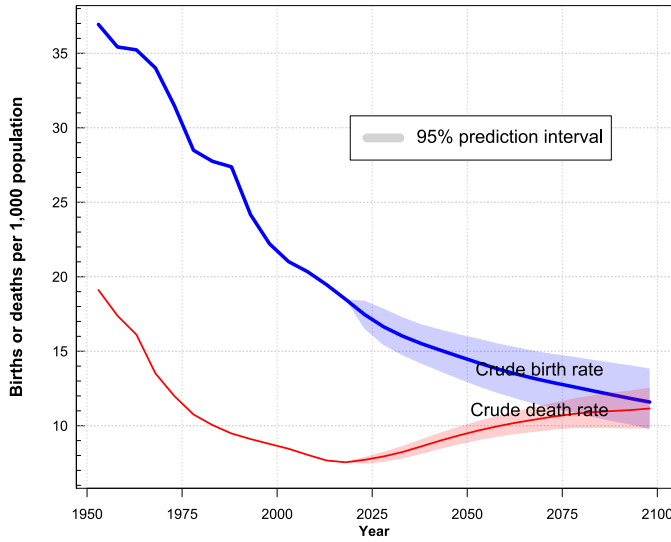
Population in 2100



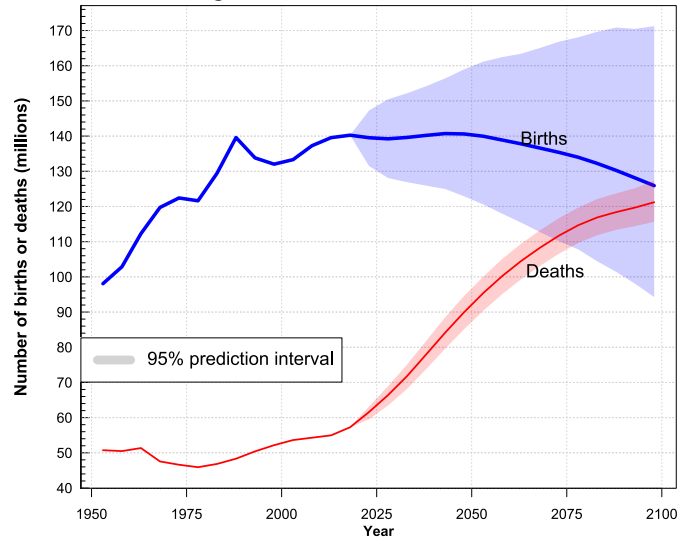
Medium-variant projections for 2020-2100 are shown as thin coloured lines, and uncertainty is shown in lighter shades for 95 per cent prediction intervals.

World

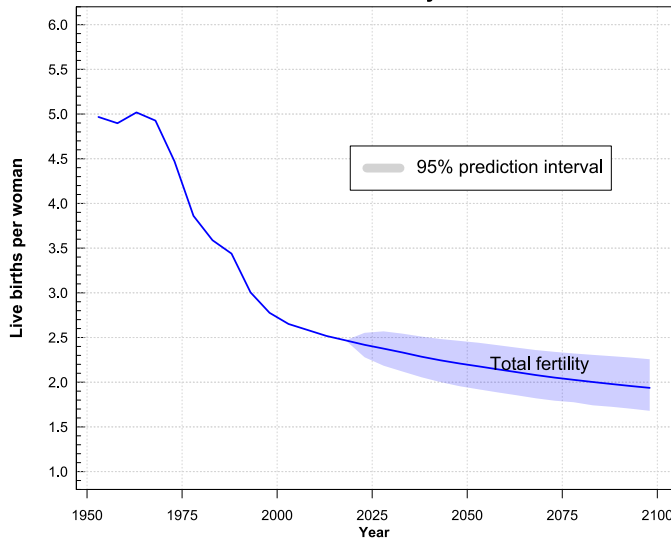
Crude birth rate and crude death rate



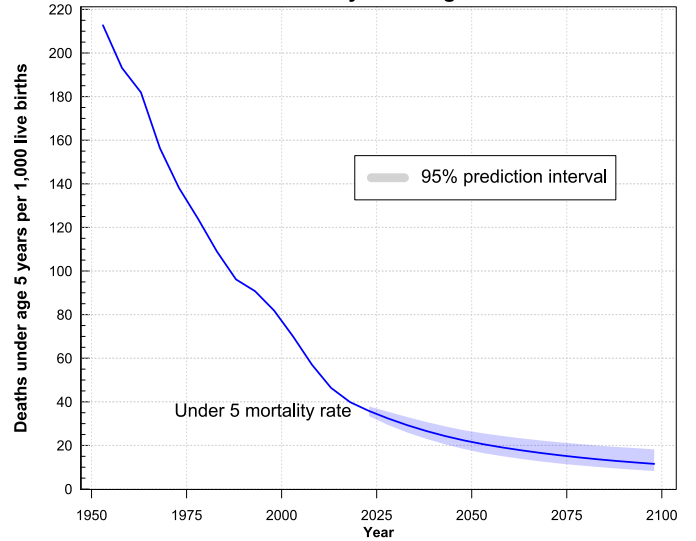
Average annual number of births and deaths



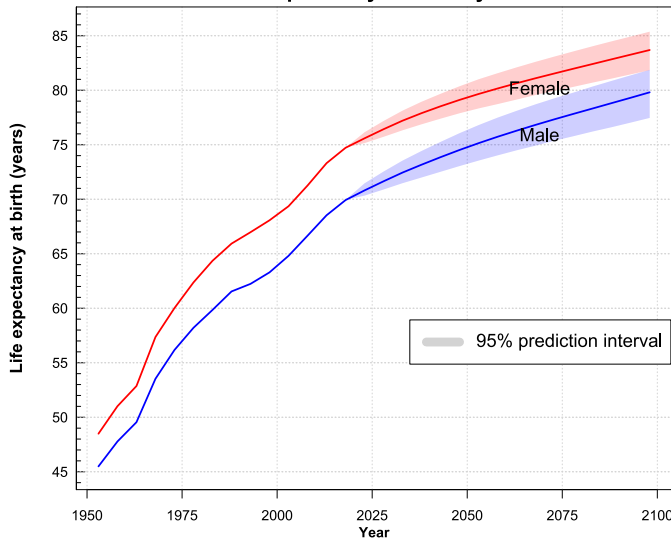
Total fertility



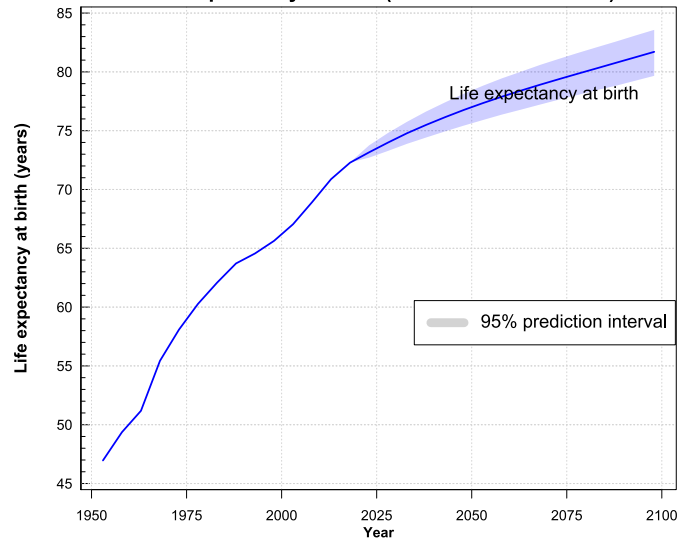
Mortality under age 5



Life expectancy at birth by sex



Life expectancy at birth (both sexes combined)



Medium-variant projections for 2020-2100 are shown as thin coloured lines, and uncertainty is shown in lighter shades for 95 per cent prediction intervals.

World

	1950	1970	1990	2000	2005	2010	2015	2020	2030	2050	2075	2100
Population												
Total population (thousands)	2 536 431	3 700 437	5 327 231	6 143 494	6 541 907	6 956 824	7 379 797	7 794 799	8 548 487	9 735 034	10 577 288	10 875 394
Median age (years) (a)	23.6	21.5	24.1	26.3	27.4	28.5	29.6	30.9	33.0	36.2	39.2	41.9
Population under age 15 (thousands).....	869 608	1 389 143	1 748 101	1 851 319	1 841 053	1 876 541	1 931 326	1 983 649	2 019 462	2 055 659	2 014 256	1 897 705
Population aged 15-24 (thousands).....	462 384	669 320	1 009 043	1 085 432	1 182 711	1 215 717	1 199 207	1 209 584	1 293 877	1 338 497	1 357 401	1 305 863
Population aged 25-64 (thousands).....	1 075 729	1 445 760	2 241 877	2 784 535	3 043 271	3 337 877	3 641 717	3 873 960	4 237 660	4 792 026	5 140 708	5 215 163
Population aged 65+ (thousands).....	128 709	196 215	328 211	422 209	474 872	526 688	607 548	727 606	997 488	1 548 852	2 064 923	2 456 663
Percentage of population under age 15.....	34.3	37.5	32.8	30.1	28.1	27.0	26.2	25.5	23.6	21.1	19.0	17.5
Percentage of population aged 15-24.....	18.2	18.1	18.9	17.7	18.1	17.5	16.3	15.5	15.1	13.8	12.8	12.0
Percentage of population aged 25-64.....	42.4	39.1	42.1	45.3	46.5	48.0	49.4	49.7	49.6	49.2	48.6	48.0
Percentage of population aged 65+.....	5.1	5.3	6.2	6.9	7.3	7.6	8.2	9.3	11.7	15.9	19.5	22.6
Dependency ratios (per 100)												
Total dependency ratio (b)	135.8	156.0	137.6	120.6	115.0	108.4	102.7	101.2	101.7	103.2	105.8	108.5
Child dependency ratio (c).....	123.8	142.4	123.0	105.5	99.4	92.6	86.0	82.4	78.2	70.8	65.6	61.4
Potential support ratio (d)	8.4	7.4	6.8	6.6	6.4	6.3	6.0	5.3	4.3	3.1	2.5	2.1
	1950-1955	1965-1970	1985-1990	1995-2000	2000-2005	2005-2010	2010-2015	2015-2020	2025-2030	2045-2050	2070-2075	2095-2100
Rates of population change												
Annual rate of population change (percentage).....	1.8	2.1	1.8	1.3	1.3	1.2	1.2	1.1	0.9	0.5	0.2	0.0
Population doubling time (years) (e)	39	34	39	52	55	57	59	64	80	132	—	—
Mortality												
Crude death rate per 1,000 population.....	19.1	13.5	9.5	8.8	8.5	8.0	7.7	7.6	7.9	9.4	10.6	11.2
Infant mortality rate (Iq0) per 1,000 live births	140	104	67	57	49	41	34	29	23	16	11	9
Under-five mortality (5q0) per 1,000 live births	213	156	96	82	70	57	46	40	32	22	16	12
Life expectancy at birth (years)	47.0	55.4	63.7	65.6	67.1	68.9	70.9	72.3	74.0	76.8	79.4	81.7
Male life expectancy at birth (years)	45.5	53.5	61.5	63.3	64.8	66.7	68.5	69.9	71.7	74.5	77.3	79.8
Female life expectancy at birth (years).....	48.5	57.4	65.9	68.1	69.4	71.3	73.3	74.7	76.4	79.1	81.5	83.7
Life expectancy at age 65 (years).....	11.3	12.9	14.4	15.0	15.4	15.9	16.5	17.0	17.7	19.0	20.3	21.5
Fertility												
Crude birth rate per 1,000 population.....	36.9	34.0	27.4	22.2	21.0	20.3	19.5	18.5	16.6	14.6	12.9	11.6
Total fertility (live births per woman).....	4.97	4.93	3.44	2.78	2.65	2.58	2.52	2.47	2.38	2.21	2.05	1.94
Sex ratio at birth (males per 100 females).....	106	106	106	108	108	107	107	107	106	105	105	105
Mean age of childbearing (years)	29.2	29.0	27.7	27.5	27.6	27.7	27.8	28.1	28.4	29.0	29.6	30.3
Births and deaths												
Number of births (thousands)	490 292	598 599	697 950	660 106	666 529	686 395	697 771	701 278	696 097	703 039	676 794	629 582
Number of deaths (thousands)	253 703	237 746	241 641	260 825	268 116	271 479	274 798	286 276	332 047	449 808	558 745	606 049
Births minus deaths (thousands).....	236 589	360 853	456 309	399 281	398 413	414 917	422 973	415 002	364 050	253 231	118 049	23 534
International migration												
Net number of migrants (thousands).....	0	0	0	0	0	0	0	0	0	0	0	0
Net migration rate (per 1,000)	0.0	0.0	0.0	0.0	0.0	0.0	0.0	0.0	0.0	0.0	0.0	0.0

a Age that divides the population in two parts of equal size, that is, there are as many persons with ages above the median as there are with ages below the median.

b The total dependency ratio is the ratio of the population aged 0-24 and that aged 65+ to the population aged 25-64. They are presented as number of dependants per 100 persons of working age (25-64).

c The child dependency ratio is the ratio of the population aged 0-24 to the population aged 25-64. They are presented as number of dependants per 100 persons of working age (25-64).

d The potential support ratio is the ratio of the population aged 25-64 to the population aged 65 years or over. They are presented as number of dependants per 100 persons of age 65 years or over.

e The population doubling time corresponds to the number of years required for the total population to double in size if the annual rate of population change would remain constant. Doubling time is computed only for fast growing populations with growth rates exceeding 0.5 per cent.

Profile excerpt from the *World Population Prospects 2019, Volume II: Demographic Profiles*

This demographic profile displays key demographic indicators for selected periods or dates between 1950-2100, for the world, development groups, regions, subregions and countries or areas with more than 90,000 inhabitants in 2019. In all tables and figures, values for 1950-2020 are estimates and those thereafter are projections (medium variant, and lower and upper 95 per cent prediction intervals for figures). For each country or area, it also provides a brief description of the data sources and demographic methods that were used to derive the base-year estimates of population and components of demographic change (fertility, child, adult and overall mortality, international migration).

Further details about the respective data sources used for each country or area are available online interactively (<https://population.un.org/wpp/DataSources/>) with a tabular version of this information also available for download (<https://population.un.org/wpp/Download/Metadata/>). Further details about the methodology used to prepare the estimates and projections is explained in a companion report (*World Population Prospects 2019: Methodology of the United Nations Population Estimates and Projections*).

To depict the uncertainty of future demographic trends, the Population Division has developed probabilistic projections for all countries and areas of the world. It should be stressed that making projections to 2100 is subject to a high degree of uncertainty, especially at the country level. In that regard, users are invited to focus not only on the outcomes of the medium variant, which for each country corresponds to the median of several thousand projected trajectories of specific demographic components, but also to the associated prediction intervals that provide an assessment of the uncertainty inherent in such projections. Detailed information on the 80 per cent and 95 per cent uncertainty bounds for different components at the country level is available on the website of the Population Division (see <https://population.un.org/wpp/> for graphs or download data files for probabilistic results).

The detailed results of the *2019 Revision* are made available through a variety of media. The website of the Population Division provides access to an extended set of data organized in Excel and CSV files (<https://population.un.org/wpp/Download/>) as well as to an interactive database that enables users to obtain specific information on selected countries or regions (<https://population.un.org/wpp/DataQuery/>).

Notes

The designations employed in this publication and the material presented in it do not imply the expression of any opinion whatsoever on the part of the Secretariat of the United Nations concerning the legal status of any country, territory, city or area or of its authorities, or concerning the delimitation of its frontiers or boundaries. The term “country” as used in this publication also refers, as appropriate, to territories or areas. For country-specific notes, please refer to: <https://population.un.org/wpp/Download/Metadata/Documentation/>.

Countries or areas have been aggregated in six continental regions: Africa, Asia, Europe, Latin America and the Caribbean, Northern America, and Oceania. Further information on continental regions is available from <https://unstats.un.org/unsd/methodology/m49/>. Countries and areas are also grouped into geographic regions based on the classification being used to track progress towards the Sustainable Development Goals of the United Nations (see: <https://unstats.un.org/sdgs/indicators/regional-groups/>). Further details about the various classifications used to group countries and areas for statistical purposes into major aggregates in this publication are available online at: <https://population.un.org/wpp/DefinitionOfRegions/>.

The figures presented are from the medium variant of the World Population Prospects 2019, the official United Nations population estimates and projections prepared by the United Nations Population Division. Data are also available in digital form and can be consulted at the Population Division’s web site at <https://www.unpopulation.org>.

Suggested citation: United Nations, Department of Economic and Social Affairs, Population Division (2019). *World Population Prospects 2019, Volume II: Demographic Profiles* (ST/ESA/SER.A/427).

Copyright © 2019 by United Nations, made available under a Creative Commons license (CC BY 3.0 IGO) <http://creativecommons.org/licenses/by/3.0/igo/>.